



# LEARNING IN THE ERA OF AI

## Interviews as an Authentic form of Assessment

Declan Phillips, Terence Ryan, Michael Quilligan & Ross Higgins

From your browser, type:

**vevox.app**

Then Key in ID: **181-448-914**



0/0

Join at: **vevox.app**

ID: **114-388-335**

Question slide

"AI makes a positive contribution to engineering education"

Strongly disagree

0%

Disagree

0%

Neutral ... I'll wait and see

0%

Agree

0%

Strongly Agree

0%



0/0

Join at: **vevox.app**

ID: **114-388-335**

Preparing Results

"AI makes a positive contribution to engineering education"

Strongly disagree

0%

Disagree

0%

Neutral ... I'll wait and see

0%

Agree

0%

Strongly Agree

0%

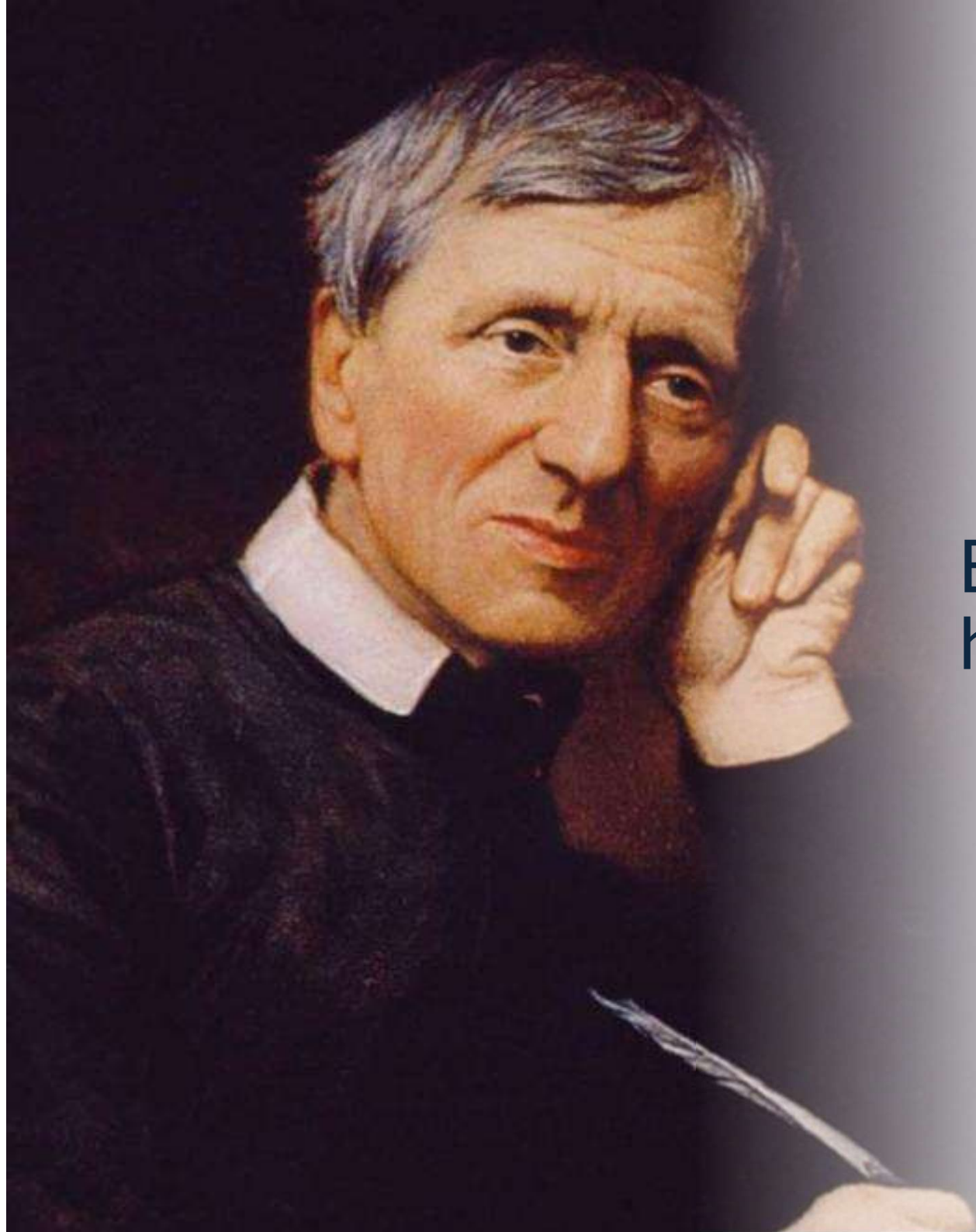




Apprenticeship model

**Mass education .... content driven**





Education is about a  
human encounter.

John Henry Newman





**Team Based & Collaborative.... Process Driven**





# 2008

Engage and Motivate

Context and Connectivity

Reflective

Year & Semester		Modules				
Year	Semester	Module 1	Module 2	Module 3	Module 4	Module 5
Year 1	Semester 1	PBL1				
	Semester 2	PBL 2				
Year 2	Semester 1	PBL 3	PBL4	PBL 5		
	Semester 2	PBL 6	PBL 7	PBL 8		
Year 3	Semester 1	PBL 9: IDP				
	Semester 2	8 Month Work Experience				
	Semester 3					
Year 4	Semester 1	PBL 10	PBL 11	FYP		
	Semester 2	PBL 12	PBL 13	FYP		

50 / 50



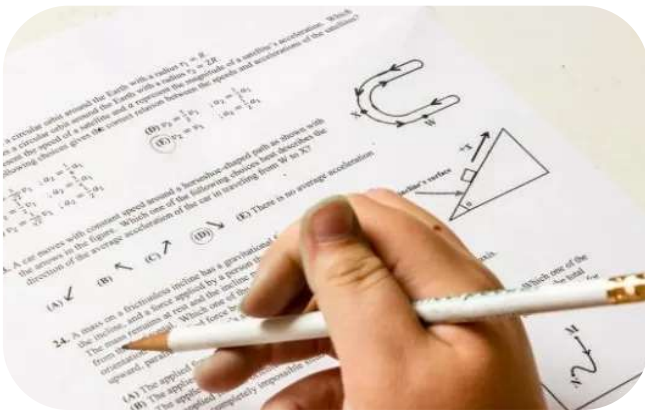
Continuous  
Assessment



Terminal  
Exam



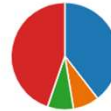
Multiple and varied assessment  
instruments



## Examinations

2. What shape does a cable carrying its self weight only take? (1 point)  
45% of respondents (17 of 38) answered this question correctly.

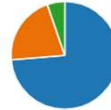
[More Details](#)



3. For a three-pinned arch of span,  $L$  and rise,  $h$ , carrying a UDL of intensity,  $w$  (kN/m), which is the correct formula for the horizontal reaction? (1 point)  
74% of respondents (28 of 38) answered this question correctly.

[More Details](#)

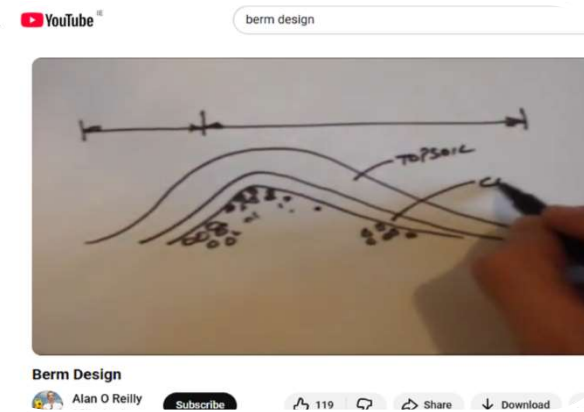
[Insights](#)



## Reports



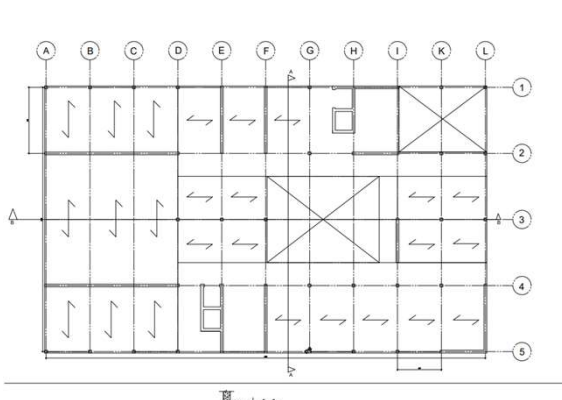
## Presentations



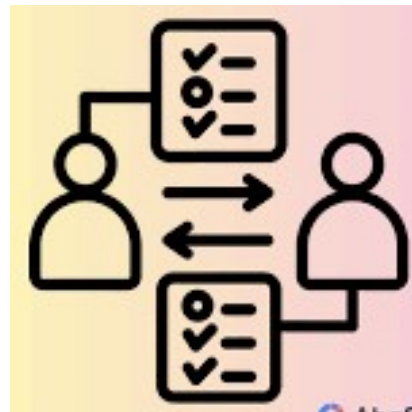
## Video Documentaries

WHAT?  
SO WHAT?  
NOW WHAT?

## Reflections



## Drawings & Posters



## Peer Assessments



## Interviews

# Distribution of Interviews throughout the Programme

Year	No. of Interviews	
	Individual	Group
2	0	3
3	0	3
4	2	1
5	3	1





# The Interview Process

# CE4015 INTERVIEW SCHEDULE WEDNESDAY WK 14 AY 22/23

**Interviewer:** D. Phillips

**Time:** 09:00 - 9:40

**Venue:** ERO-013

TEAM 1

1 BA  
1 DO  
1 KEA  
1 LO  
1 SLA

**Interviewer:** D. Phillips

**Time:** 09:40 - 10:20

**Venue:** ERO-013

TEAM 2

2 BR  
2 DE  
2 KE  
2 M  
2 RY



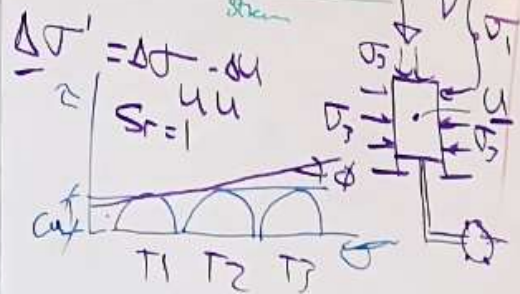
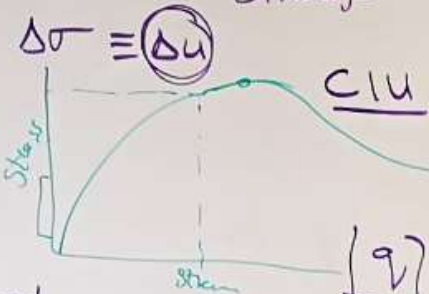


TEAM 3 7/12/22

TSA  $\leftarrow (k) \rightarrow$

FG

Cu - Undrained Shear Strength

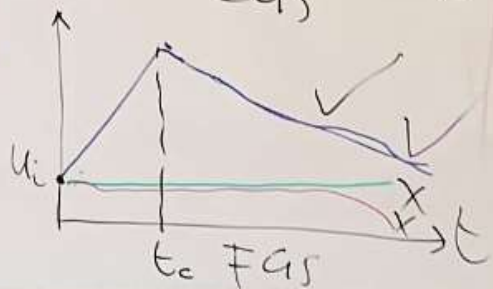
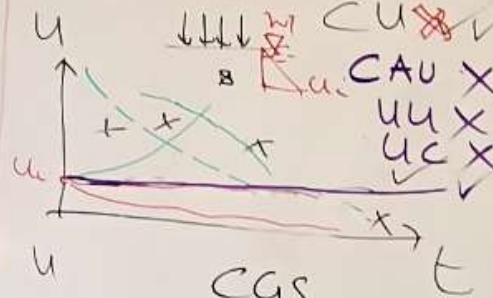


EFA

CG

c' phi'

Triaxial



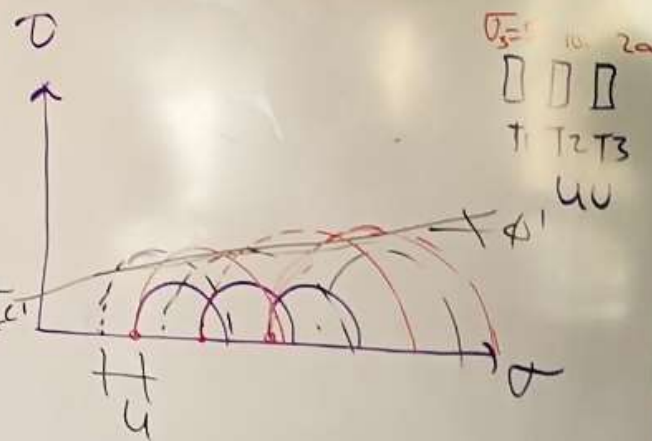
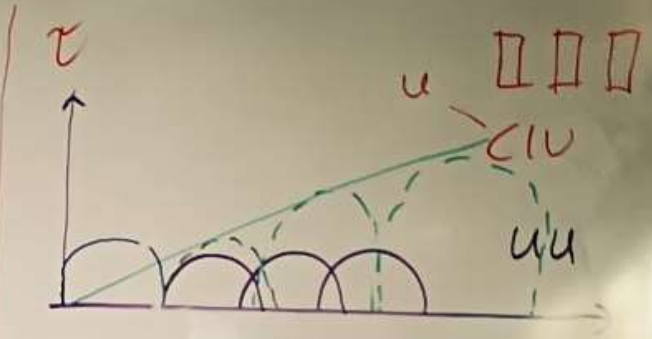
CID

CAU X  
CIA X

CIU X

CU X

CAU X  
UU X  
UC X





<b>Student</b>	<b>Grading</b>					<b>Comments</b>
	<b>A</b>	<b>B</b>	<b>C</b>	<b>D</b>	<b>E</b>	
<b>Student 1</b>			✓			<b>Good on fundamentals, more work req'd on topic x</b>
<b>Student 2</b>				✓		<b>More focus on analytical topics required</b>
<b>Student 3</b>		✓				<b>Poor grasp of Project LO's and topic fundamentals.</b>
<b>Student 4</b>					✓	<b>Outstanding performance</b>
<b>Student 5</b>			✓			<b>Average performance, Good on basics of the topic</b>

# Class Sizes & Time Involved

- Class sizes vary from 40 to 115 students.
- Time :
  - Class size of 40 – circa 6 hours.
  - For cohorts of 100 to 120 – Two Interviewers; 7 to 8 hours but the grading is part of this time.
    - Independently grade the first two groups –bias and harmonise grading.
    - The remaining teams split between interviewers.



- Audio Recording of Interviews

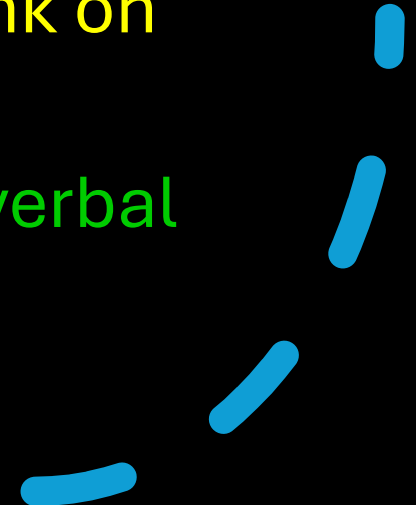
Accuracy

Sharing




# Lecturer observed benefits of student group interviews

- Students learn from each other
- It is a useful revision exercise in advance of the final exam
- There is no where to hide in the interview
- It rewards the students who work consistently throughout the semester
- It improves ability to think on ones feet
- Improves listening and verbal communication skills



# What Students Say

- Stressful experience
  - Working consistently & contributing throughout the semester is rewarded
  - Observe the price to be paid for lack of preparation
  - Feel more confident in defending their work
- 

# Key takeaways ...

- Group Interviews have proven to be authentic and robust form of assessment.
- Meaningful learning is very much enhanced through human dialogue
- Time efficient
- This type of learning experience can't be replicated by AI!